



# BURGESS-MANNING

Burgess-Manning, Inc., Subsidiary of Nitram Energy, Inc.  
227 Thorn Avenue, Orchard Park, NY 14127  
Phone: (716) 662-6540 Fax: (716) 662-6548 Website: www.burgess-manning.com

## MODEL WVK - Intake Water Separator

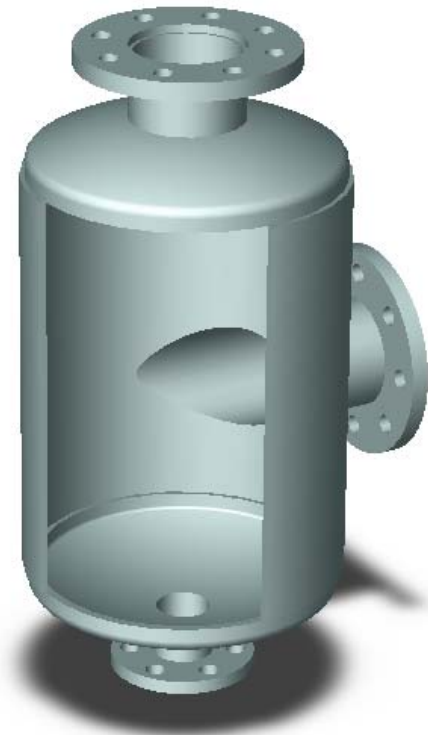
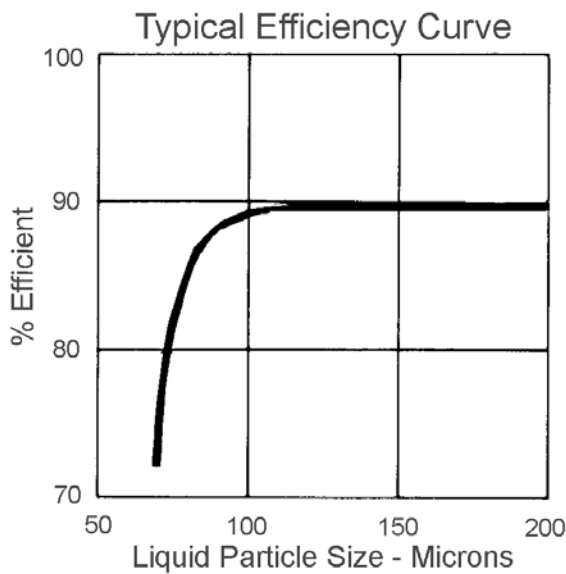
### Burgess-Manning Intake Separator/Silencer For Wet Vacuum Rotary Blowers

#### Description:

Burgess-Manning centrifugal type water separators are designed to remove entrained liquid from air in a vacuum system.

#### Features:

- 90% efficient extraction of free liquid
- Economically priced
- Long service life



#### Specifications:

<b>Extraction Efficiency:</b>	90% of Free Liquid
<b>Maximum Operating Vacuum:</b>	30" Hg
<b>Typical Sizes:</b>	4" - 30" Other Sizes Available Upon Request
<b>Standard End Connections:</b>	NPT or 125# ANSI Flanged
<b>Standard Material of Construction:</b>	Carbon Steel Other Materials Available Upon Request
<b>Finish:</b>	Prime Coated Exterior

**Figure 1.0**  
Burgess-Manning model WVK water separator.

#### Theory of Operation:

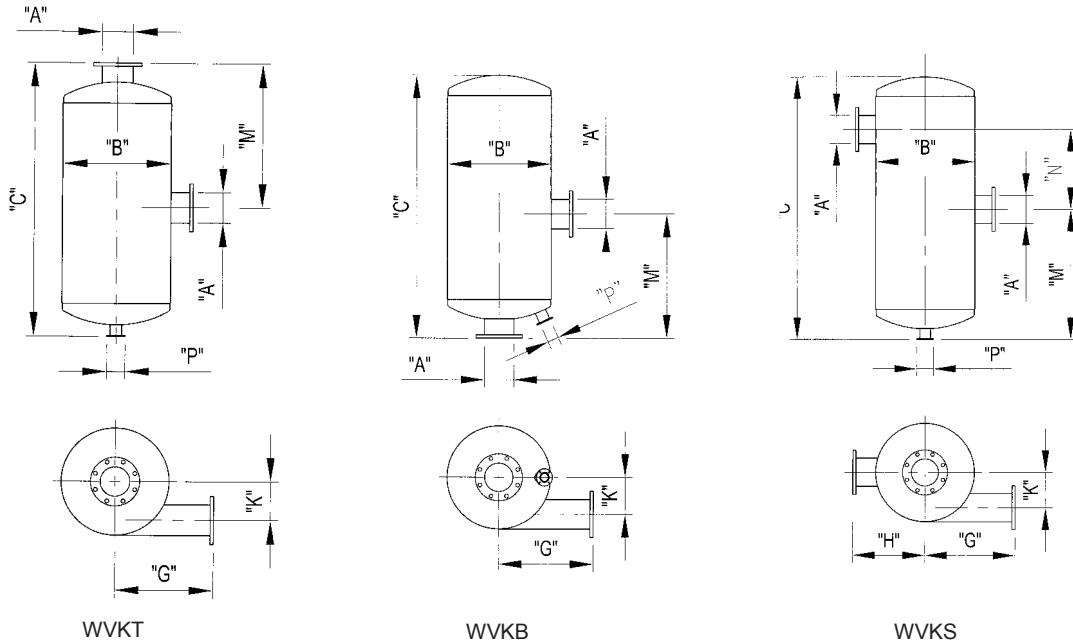
Air flow passes through a separation section where 90% of the free liquid is extracted centrifugally.



# BURGESS-MANNING

Burgess-Manning, Inc., Subsidiary of Nitram Energy, Inc.  
 227 Thorn Avenue, Orchard Park, NY 14127  
 Phone: (716) 662-6540 Fax: (716) 662-6548 Website: www.burgess-manning.com

## MODEL WVK - Intake Water Separator



Catalog Number	Dimensions in Inches													Estimated Weight in lbs.		
	All Models					WVKT		WVKB		WVKS				WVKT	WVKB	WVKS
	A	B	G	K	P	C	M	C	M	C	M	N	H			
WVK-4	4	12	11	3 3/4	2	26	15	23	11	33	11	15 5/8	9 3/8	60	75	65
WVK-5	5	16	14 1/4	5 3/16	2 1/2	31	18	28	13	39	13	18 3/4	11	95	120	100
WVK-6	6	18	15 1/2	5 11/16	3	36	21	33	15	45	15	22	12	125	165	165
WVK-8	8	22	18	6 11/16	3 1/2	46	27	43	19	57	19	28	14	175	225	220
WVK-10	10	24	23	6 5/8	4	58	34	54	24	70	24	34	16	285	365	355
WVK-12	12	30	25 1/2	8 5/8	5	68	40	64	28	82	28	40	19	460	570	585
WVK-14	14	36	28	11	6	78	46	74	32	94	32	47	22	690	845	860
WVK-16	16	42	28	13	6	88	52	84	36	108	36	55	25	1045	1245	1330
WVK-18	18	42	30 1/2	12	8	98	58	94	40	116	40	58	25	1175	1420	1410
WVK-20	20	48	33	14	8	108	64	104	44	132	44	67	28	1500	1890	1880
WVK-22	22	54	35	16	8	120	71	115	49	145	49	73	32	1815	2295	2285
WVK-24	24	60	38	18	10	130	77	125	53	159	53	80 1/2	35	2650	3215	3355
WVK-26	26	66	40 1/2	20	10	140	83	135	57	171	57	86 1/2	38	3250	3945	4245
WVK-28	28	72	43	22	10	150	89	145	61	184	61	93 1/2	41	3805	4620	4865
WVK-30	30	78	45 1/2	24	10	160	95	155	65	197	65	100 1/2	44	4560	5495	5810

NOTES: -Flanges are drilled to match 125 lb. American Standard Flanges  
 -Larger units available upon request  
 -Specifications subject to change without notice