



BURGESS-MANNING

Burgess-Manning, Inc., Subsidiary of Nitram Energy, Inc.
227 Thorn Avenue, Orchard Park, NY 14127
Phone: (716) 662-6540 Fax: (716) 662-6548 Website: www.burgess-manning.com

MODEL TH - Vent And Blowdown Silencer

A Revolutionary Design That Provides Greater Noise Reduction In a Smaller Silencer

Description:

The Burgess-Manning Model TH Vent and Blowdown Silencer is designed to reduce unwanted noise created by high pressure air, gas, or steam flowing through a control valve or stack, eventually discharging to atmosphere. Common applications for the TH include flow control valves, safety relief valves, steam, air, & gas vents, process gas blowdowns, boiler start-up & purge and switch valves. The model TH is significantly smaller in size compared to conventional units which helps to reduce installation costs. The Model TH design stems from field proven performance of technology developed during intensive laboratory research, based in turn on acoustic principles derived by Burgess-Manning's engineers.

Standard Features:

- Compact design
- All welded, heavy-duty carbon steel construction
- Full penetration welding of inlet nozzle and diffuser in accordance with ASME section IX procedures
- Choice of Inlet nozzle connection (BFW), ANSI flange, etc
- All exterior surfaces prime painted
- Vertical or Horizontal installation
- Lifting lugs

TYPICAL PERFORMANCE DYNAMIC INSERTION LOSS (DIL), Db

| MODEL | OCTAVE BAND CENTER FREQUENCY (Hz) | | | | | | | |
|-----------------|-----------------------------------|-----|-----|-----|----|----|----|----|
| | 63 | 125 | 250 | 500 | 1K | 2K | 4K | 8K |
| TH Single Stage | 3 | 6 | 13 | 22 | 24 | 25 | 25 | 25 |
| TH Double Stage | 5 | 15 | 24 | 37 | 40 | 41 | 33 | 29 |

NOTE: The typical performance values shown were established through field studies, laboratory testing and application of acoustic principles. Actual performance will depend upon silencer size, gas density, temperature, and unsilenced noise intensity. In certain applications, DIL values of 50+ Db can be achieved. For questions regarding a specific application and service, contact the Burgess-Manning representative in your area.

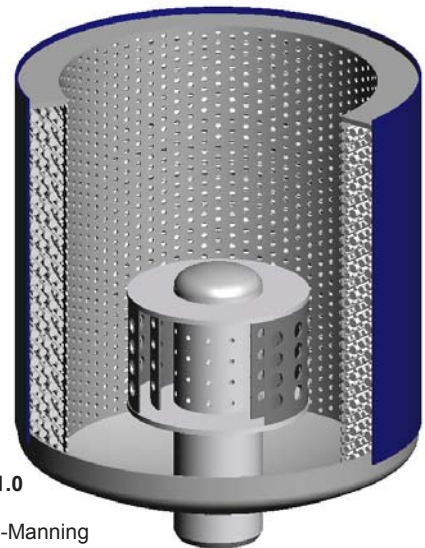


Figure 1.0
Typical Burgess-Manning Model TH silencer

Theory of Operation:

The Model TH design differs from traditional silencers in that it prevents, rather than attenuates flow generated noise. This is accomplished by using **advanced micro-diffusion technology** (patent pending) to prevent the formation of noise producing turbulent jets in the gas stream, and reduce or eliminate the need for bulky absorptive acoustic panels commonly used in noise control. The technology can be applied to utilize existing pipeline pressure or to impose additional backpressure on a piping system.





BURGESS-MANNING

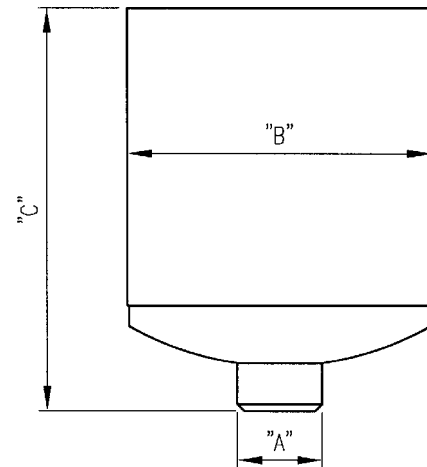
Burgess-Manning, Inc., Subsidiary of Nitram Energy, Inc.
 227 Thorn Avenue, Orchard Park, NY 14127
 Phone: (716) 662-6540 Fax: (716) 662-6548 Website: www.burgess-manning.com

MODEL TH - Vent And Blowdown Silencer

| MODEL And NORMAL SIZE | DIMENSIONS AND WEIGHTS | | | | | | |
|-----------------------|------------------------|--------|-----------|--------|-----------|--------|-----------|
| | All Models | TH-0 | | TH-1 | | TH-2 | |
| | B (in) | C (in) | WT (lbs.) | C (in) | WT (lbs.) | C (in) | WT (lbs.) |
| TH-17 | 24 | 38 | 150 | 55 | 400 | 72 | 600 |
| TH-22 | 30 | 46 | 300 | 66 | 600 | 86 | 850 |
| TH-26 | 36 | 51 | 450 | 73 | 1100 | 95 | 1700 |
| TH-30 | 42 | 59 | 750 | 85 | 1400 | 111 | 2000 |
| TH-35 | 48 | 67 | 900 | 97 | 1800 | 127 | 2600 |
| TH-40 | 54 | 75 | 1100 | 110 | 2300 | 145 | 3400 |
| TH-44 | 60 | 81 | 1500 | 122 | 3100 | 163 | 4500 |
| TH-50 | 66 | 91 | 2500 | 137 | 4300 | 183 | 6100 |
| TH-54 | 72 | 90 | 2900 | 132 | 4800 | 168 | 6700 |
| TH-59 | 78 | 103 | 3500 | 143 | 5600 | 182 | 7700 |
| TH-63 | 84 | 111 | 4200 | 153 | 6600 | 195 | 9000 |
| TH-68 | 90 | 118 | 4500 | 164 | 7200 | 209 | 9900 |
| TH-72 | 96 | 123 | 5100 | 175 | 8400 | 224 | 11700 |
| TH-77 | 102 | 129 | 6000 | 181 | 9700 | 233 | 13400 |
| TH-82 | 108 | 137 | 7000 | 189 | 11500 | 244 | 16000 |
| TH-88 | 114 | 148 | 8700 | 210 | 13600 | 272 | 18500 |
| TH-93 | 120 | 146 | 9600 | 215 | 14800 | 279 | 20000 |



CUSTOM FABRICATION IN OUR WHOLLY-OWNED FACILITIES

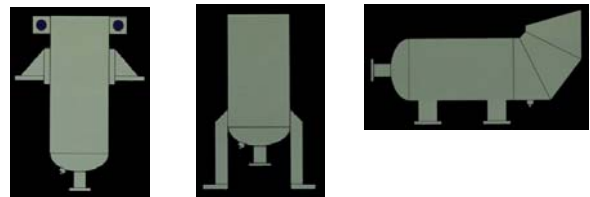


Notes: -"A" dimension determined by request
 -Custom sizes available upon request

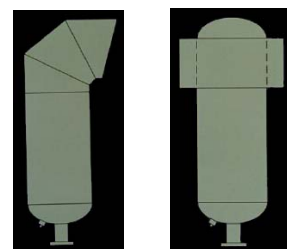
Optional Features:

- Mounting brackets or supports
- Inlet Flange
- Weatherhood
- Finish Paint
- Special Materials - Stainless, Alloys
- Inlet orifice for flow control

Mounting Brackets



Weather Hoods



Your local representative is: