



DA VENT SILENCER
BULLETIN 1940-9

APPLICATION

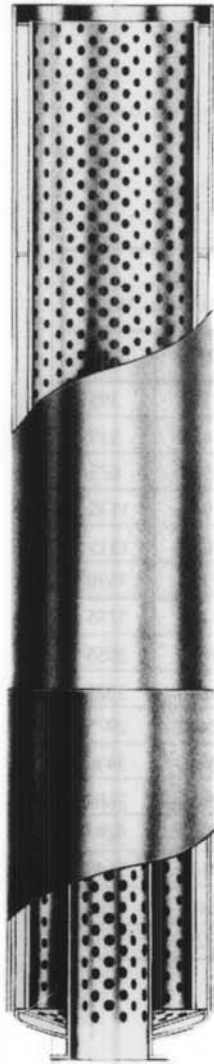
For all vent and blowdown applications where upstream pressure of valve is less than 1,000 psia and/or upstream temperature of valve is less than 1000°F. Designed for critical vent applications requiring broad-band, high degree silencer performance. Vertical installation.

DESIGN

This new, patented design utilizes a two or more step silencing treatment, with each step accomplishing a diffusion and smoothing of the flow and an overall absorption of sound. The first stage provides a sturdy shock absorbing cushion to receive and mitigate rough blasts; the additional stages moderate and smooth the flow while absorbing sound energy. Additional attenuation can be obtained by adding a section to the DA-2 resulting in a DA-3 silencer. This additional section can be included at the time of original manufacture, or added as a new order at a future date to an existing DA-2 installation.

CONSTRUCTION

Silencer is of all-welded steel construction. Exterior surfaces are prime coated. Acoustic absorptive material is dense hairfelt or fibreglass.

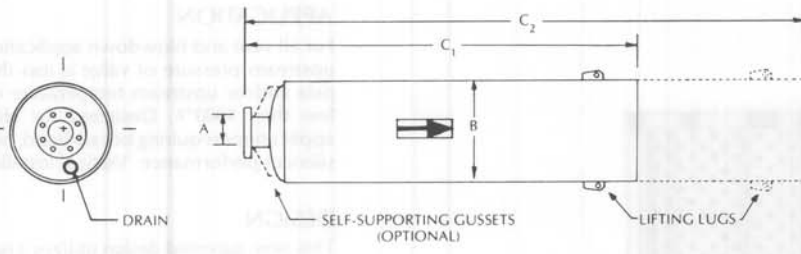


TYPICAL DA-2

Typical Performance
Dynamic Insertion Loss (DIL), dB

Silencer Velocity, fpm	Octave Band Center Frequency Hz								
	63	125	250	500	1	2	4	8k	
DA-2	5000	15	27	44	49	49	42	52	48
	10000	19	28	38	43	44	48	57	50
	15000	22	29	32	35	38	44	52	47
	20000	25	29	27	29	32	40	47	43
DA-3	5000	25	43	63	65	60	40	65	64
	10000	30	40	53	55	53	59	65	61
	15000	33	39	43	42	43	47	59	53
	20000	35	37	34	35	36	40	49	50

Note: The above DIL values were obtained during actual vent and blowdown testing of standard production silencers venting ambient air from 130 psia to atmosphere. The peak values shown above will tend to shift toward the lower frequencies in the larger sizes. Actual performance will depend upon silencer size, gas density, temperature, and amplitude of input.



Catalog Number	DIMENSIONS IN INCHES				Est. Shipping Wgt.	
	All Models		DA 2	DA 3	DA 2	DA 3
	A	B	C ₁	C ₂		
DA 2-8	4	14	83	107	315	395
DA 2-10	5	16	90	108	430	535
DA 2-12	6	18	115	139	550	675
DA 2-14	6	20	162	192	945	1135
DA 2-16	8	22	168	204	1070	1315
DA 2-18	8	24	170	206	1185	1510
DA 2-20	10	26	181	223	1475	1755
DA 2-22	10	28	195	237	1680	2055
DA 2-24	12	30	211	259	1930	2385
DA 2-26	12	32	224	272	2410	2975
DA 2-28	14	34	224	272	2840	3430
DA 2-30	14	36	248	302	2955	3665
DA 2-32	16	38	254	308	3555	4285
DA 2-36	18	42	309	369	4675	5645
DA 2-42	20	48	358	430	6465	7700
DA 2-48	24	54	398	482	9295	11210

Flanges are drilled to match 125 LB American Standard Flanges.
 Specifications subject to change without notice.

B **BURGESS-MANNING**
 Burgess-Manning, Inc.
 Subsidiary of Nitram Energy, Inc.
 227 Thorn Avenue
 Orchard Park, New York 14127-2682
 (716) 662-6540 Fax: (716) 662-6548
 www.burgess-manning.com

Printed in USA