



BURGESS-MANNING

Burgess-Manning, Inc., Subsidiary of Nitram Energy, Inc.

227 Thorn Avenue, Orchard Park, NY 14127

Phone: (716) 662-6540 Fax: (716) 662-6548 Website: www.burgess-manning.com

MODEL BMBGI-LH - Blower Intake Silencer

Burgess-Manning Above Transition Speed Blower Intake Silencer

Description:

The Burgess-Manning Model BMBGI-LH Blower Intake Silencer is designed to compliment the Burgess-Manning Model BPDA bedplate discharge silencer in above transition speed applications. In conjunction with the model BPDA, the Model BMBGI-LH provides the blower packager an easily assembled package with extremely low noise characteristics.

Features:

- Noise reduction up to 40 dB
- Economically priced
- Long service life
- All welded steel construction for explosion resistant service

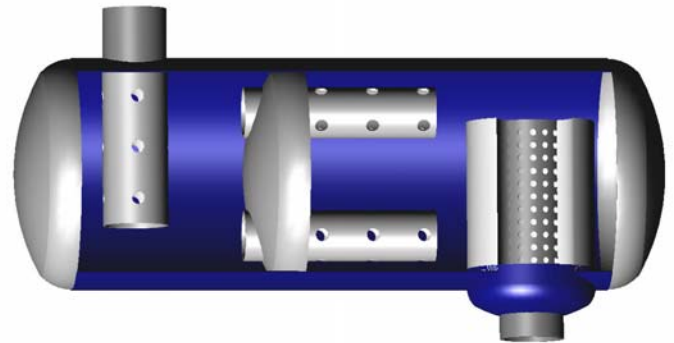
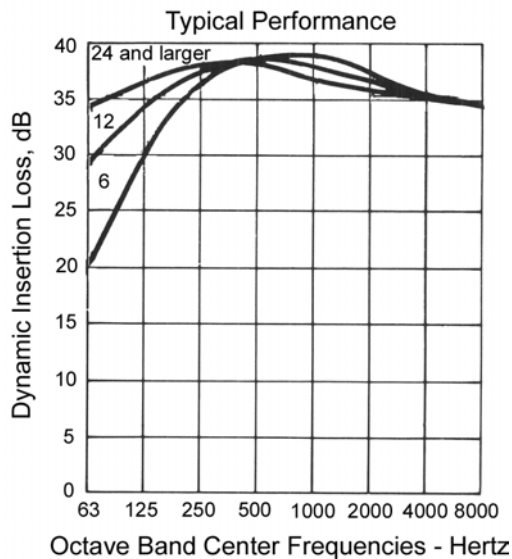


Figure 1.0

Typical Burgess-Manning combination reactive/absorptive type silencer

Specifications:

Maximum Noise Attenuation:	40 dB
Typical Sizes:	2" - 6"
Standard End Connections:	Plain, NPT or 125# ANSI Flanged
Standard Material of Construction:	Carbon Steel Polyester Pack rated to 300 °F
Finish:	Prime Coated Exterior

Theory of Operation:

The Burgess-Manning patented principle used in the design of Burgess-Manning silencers involves passing the flow of air or gas through an acoustic absorption section, an arrangement of ported tubes and snubbing chambers which attenuate the noise over a wide frequency range.



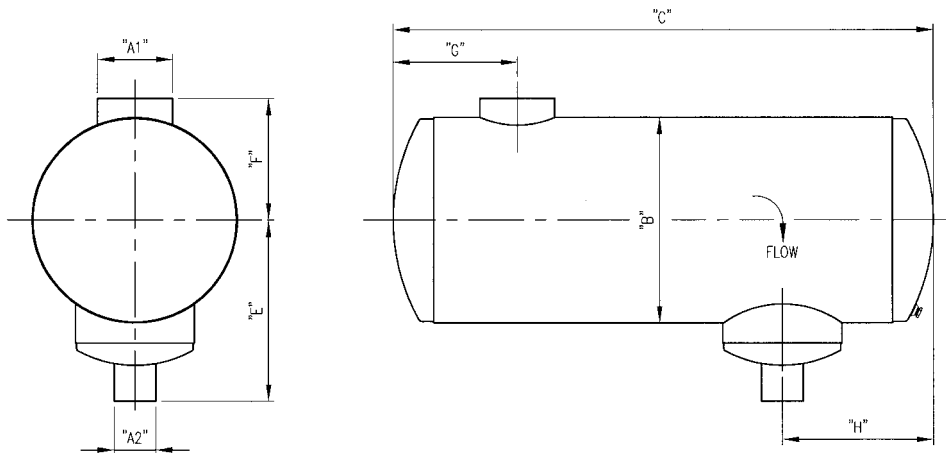
BURGESS-MANNING

Burgess-Manning, Inc., Subsidiary of Nitram Energy, Inc.

227 Thorn Avenue, Orchard Park, NY 14127

Phone: (716) 662-6540 Fax: (716) 662-6548 Website: www.burgess-manning.com

BMBGI-LH - Blower Intake Silencer



Catalog Number	Dimensions in Inches									Estimated Weight in lbs.
	A ₁	A ₂	B	C	E	F	G	H		
								Min.	Max.	
BMBGI-LH-1.5	1 1/2	1 1/2	6 1/2	21	8	4	5 1/2	4	8	21
BMBGI-LH-2	2	2	8	27	9	4 1/2	7	6	10	28
BMBGI-LH-2.5	2 1/2	2 1/2	10	28	10	5 1/2	7	7	11	55
BMBGI-LH-3	3	3	10	46	12	5 1/2	9	7	11	80
BMBGI-LH-4	4	4	14	47	14	8	9	8	17	140
BMBGI-LH-5	5	5	16	59	15	9	11	9	20	200
BMBGI-LH-6	6	6	18	66	17	12	11	10	24	280

- Notes:
- Larger Units available upon request
 - Specifications subject to change without notice
 - Standard inlet connections FNPT
 - Standard outlet connections plain