



BURGESS-MANNING

Burgess-Manning, Inc., Subsidiary of Nitram Energy, Inc.

227 Thorn Avenue, Orchard Park, NY 14127

Phone: (716) 662-6540 Fax: (716) 662-6548 Website: www.burgess-manning.com

MODEL BMBCI - Blower Intake Silencer

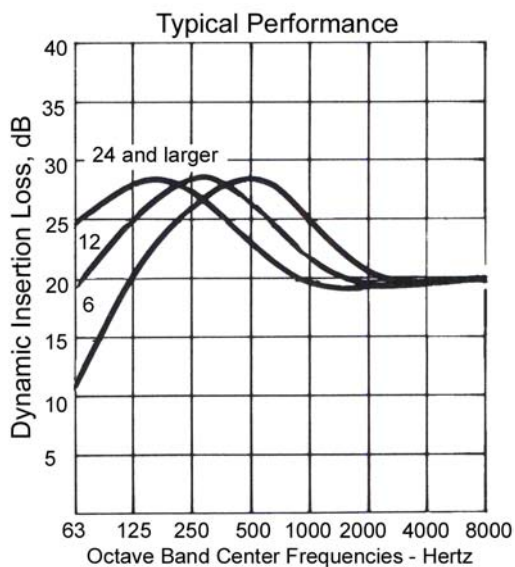
Burgess-Manning Below Transition Speed Blower Intake Silencer

Description:

Burgess-Manning chambered reactive type blower intake silencers are specifically designed to provide ideal noise reduction at blower speeds below transition speed.

Features:

- Noise reduction up to 30 dB
- Economically priced
- Long service life
- All welded steel construction for explosion resistant service

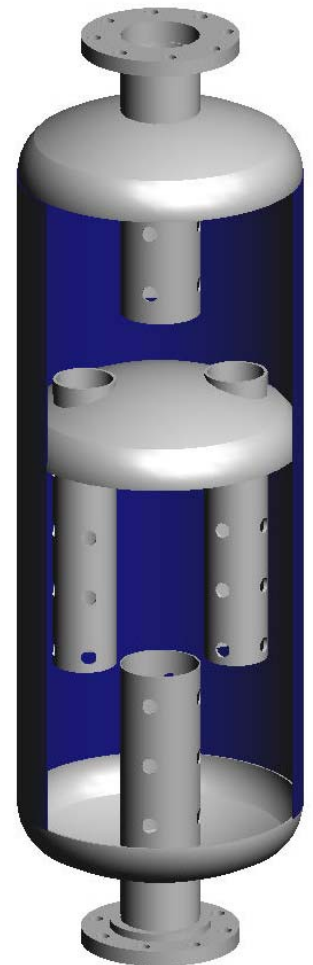


Specifications:

Maximum Noise Attenuation:	30 dB
Typical Sizes:	8" - 24" Larger Sizes Available Upon Request
Standard End Connections:	125# ANSI Flanged
Standard Material of Construction:	Carbon Steel
Finish:	Prime Coated Exterior

Figure 1.0

Typical Burgess-Manning reactive type silencer



Theory of Operation:

The Burgess-Manning patented principle used in the design of Burgess-Manning silencers involves passing gas flow through snubbing chambers. These snubbing chambers house an arrangement of ported tubes, which attenuate the noise to smooth, quiet flow.



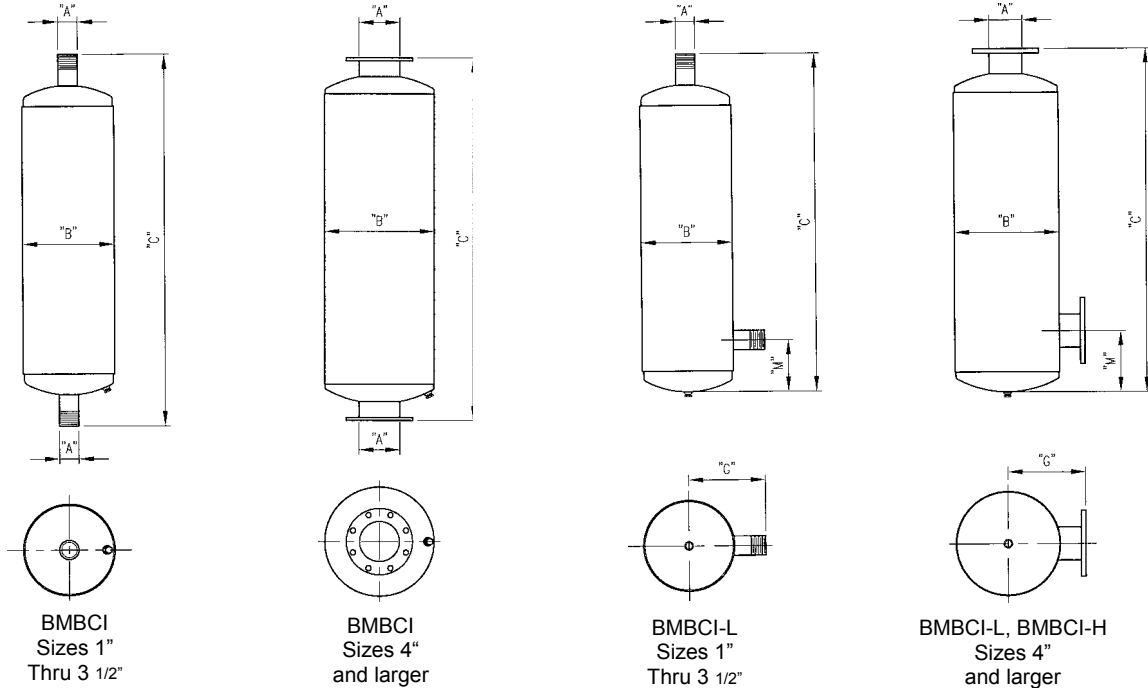
BURGESS-MANNING

Burgess-Manning, Inc., Subsidiary of Nitram Energy, Inc.

227 Thorn Avenue, Orchard Park, NY 14127

Phone: (716) 662-6540 Fax: (716) 662-6548 Website: www.burgess-manning.com

Model BMBCI - Blower Intake Silencer



Catalog Number	Dimensions in Inches									Estimated Weight in lbs.		
	All Models		BMBCI	BMBCI-L BMBCI-H		M						
	A	B	C	C	G	BMBCI-L		BMBCI-H		BMBCI	BMBCI-L	BMBCI-H
						Min.	Max.	Min.	Max.			
BMBCI-8	8	22	68	65	15	10	22	32	46	345	345	370
BMBCI-10	10	24	81	78	17	12	30	40	58	500	500	550
BMBCI-12	12	30	88	85	19	13	34	48	69	810	810	900
BMBCI-14	14	30	100	97	19	14	40	50	80	1,100	1,100	1,200
BMBCI-16	16	36	120	117	22	15	45	63	92	1,450	1,450	1,600
BMBCI-18	18	42	127	124	25	18	50	71	105	1,950	1,950	2,200
BMBCI-20	20	42	139	136	25	19	55	78	115	2,220	2,220	2,450
BMBCI-22	22	48	158	156	28	21	65	92	127	2,830	2,830	3,120
BMBCI-24	24	54	164	163	31	22	67	94	136	3,480	3,480	3,850

- Notes:
- Flanges are drilled to match 125 lb. American Standard Flanges
 - Larger Units available upon request
 - Specifications subject to change without notice